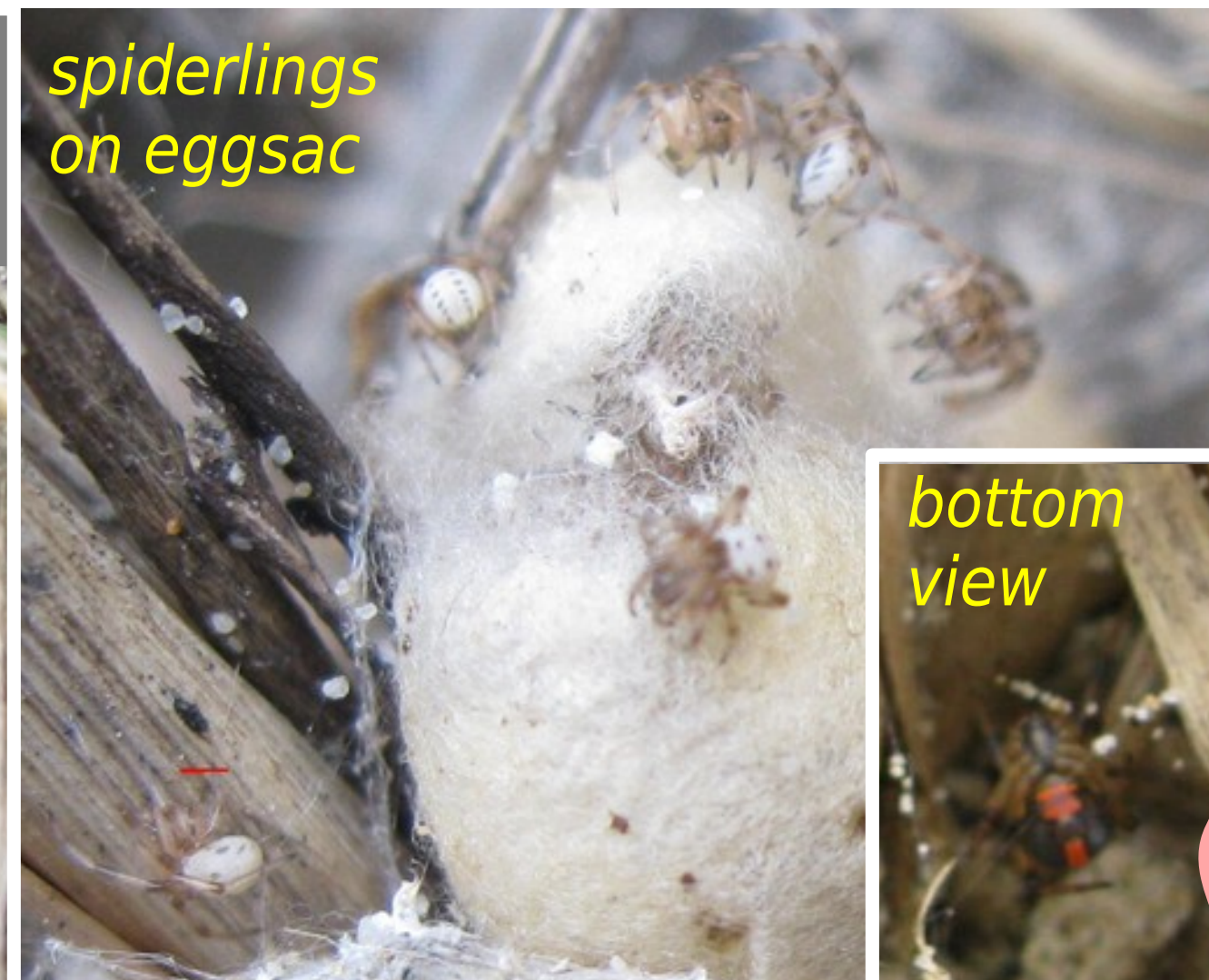




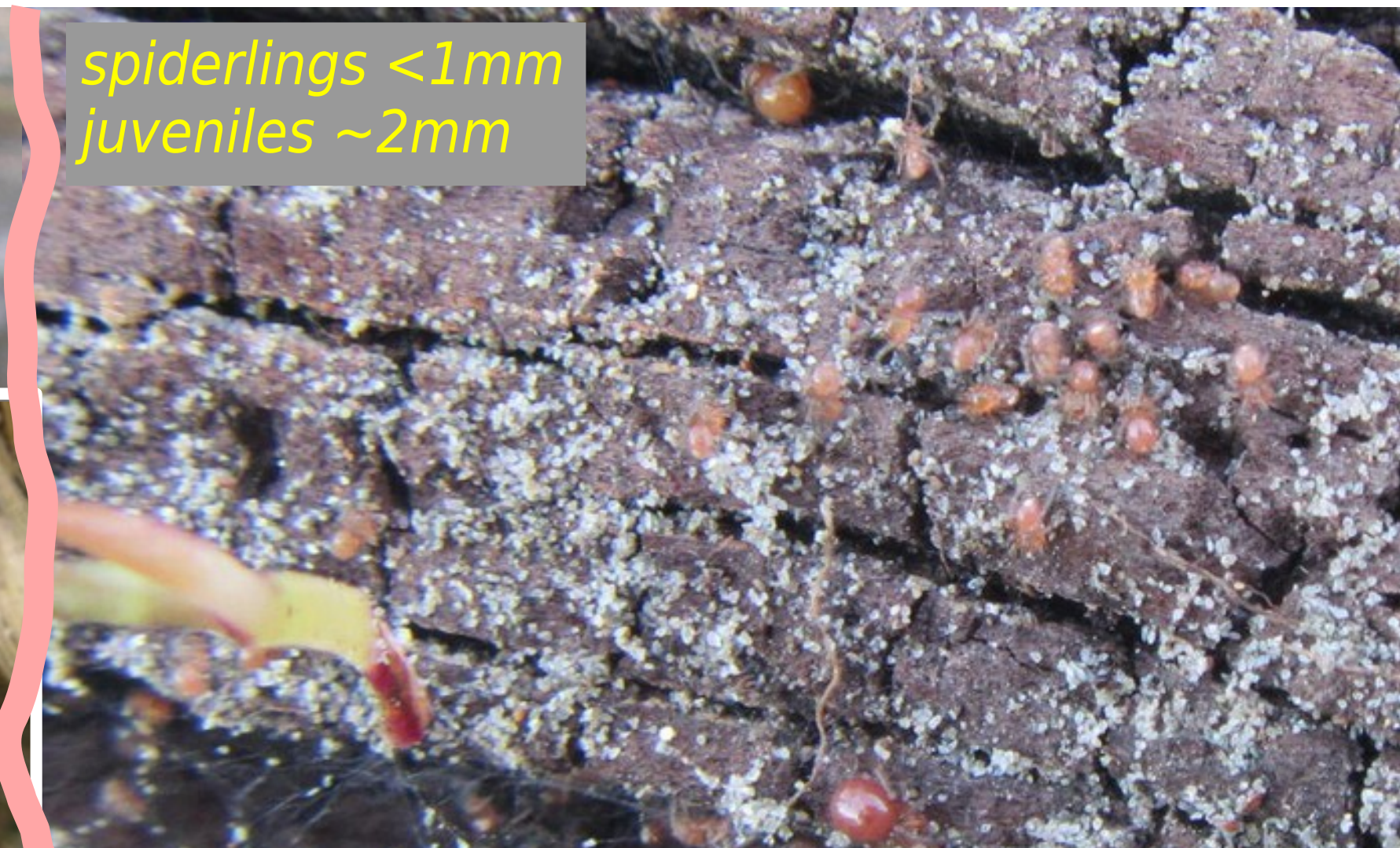
black katipō female



Web with satiny eggsacs in front



spiderlings on eggsac



spiderlings <1mm juveniles ~2mm



bottom view



Mature female with shiny abdomen and yellow stripe



red katipō female and male



refs



Juvenile 2mm

Katipō vs false Katipō



Latrodectus katipo

- endemic, threatened
- habitat is solely dunes & open sand
- males much smaller than females
- black and red colour morphs
- juveniles are mostly white

Steatoda capensis

- S.African invader, preys on katipō
- habitat is everywhere, incl. dunes
- males a bit smaller than females
- brown to black adults
- juveniles are light brown, darkening



false katipō female with cottony eggsac



bottom view



gravid

female Eggsac

Inat URL



post-gravid

male



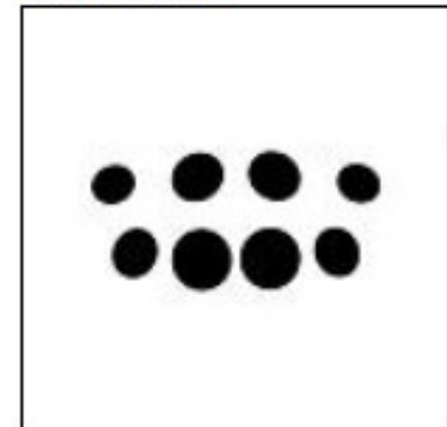
subadult male



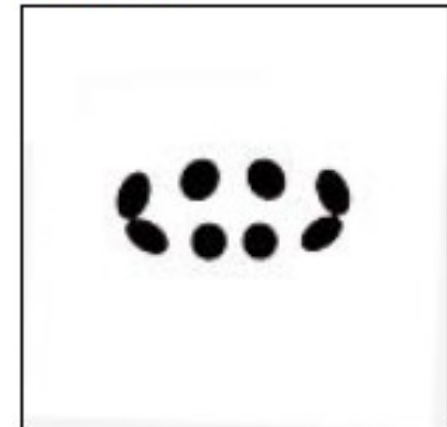
katipō eye pattern

Worst case, with a mature, all-black female katipō vs. the same for false katipō, one diagnostic criterion becomes eye pattern. You need magnification, and good luck

Latrodectus



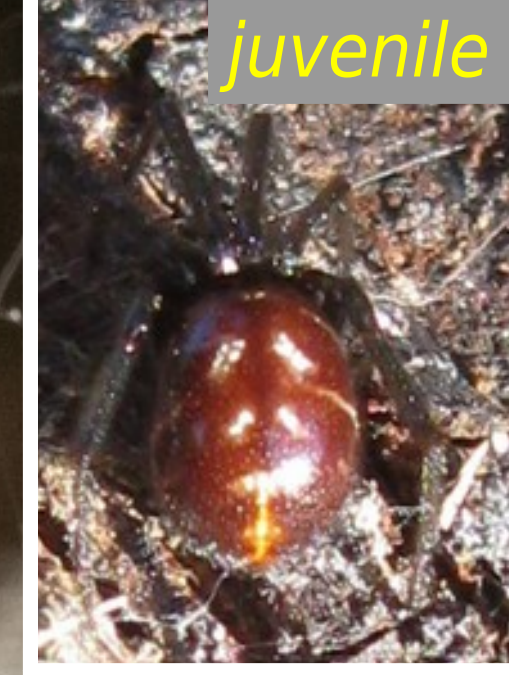
Steatoda



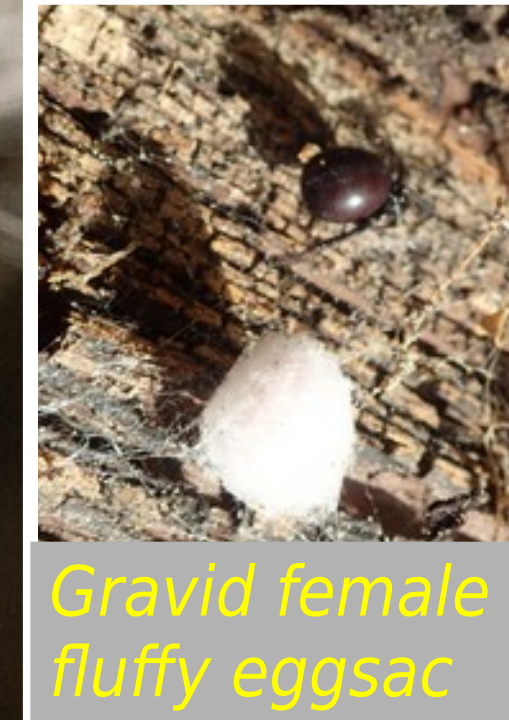
Bugguide URL



adult false katipō female



False katipō eye pattern



Gravid female fluffy eggsac



black katipō female



Adult male



adult male false katipō

Inat URL

